

Undercarriage

The oscillating undercarriage D5HD adapts perfectly to uneven surfaces. According to customer needs, the track can be fitted with two types of track pads in two different widths: 600 mm / 24 in (STD-version) and 900 mm / 36 in (LGP-version). Both versions guarantee excellent stability and low ground pressure: with the LGP-version ground pressure being a best-in-class 0,36 kg/cm² (4.9 psi)! Lower ground pressure also means less wear and tear and a longer working season in wet and swampy areas and in muskeg.

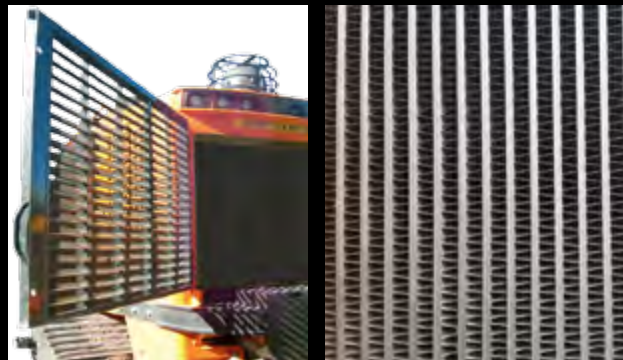


Radiators and fans

PT-475 is equipped with an oversized engine radiator and oil cooler, allowing the machine to operate in very hot climate with no overheating issues. Both radiators come with coarse fins, preventing them from getting plugged by dust and dirt and making cleaning much easier.

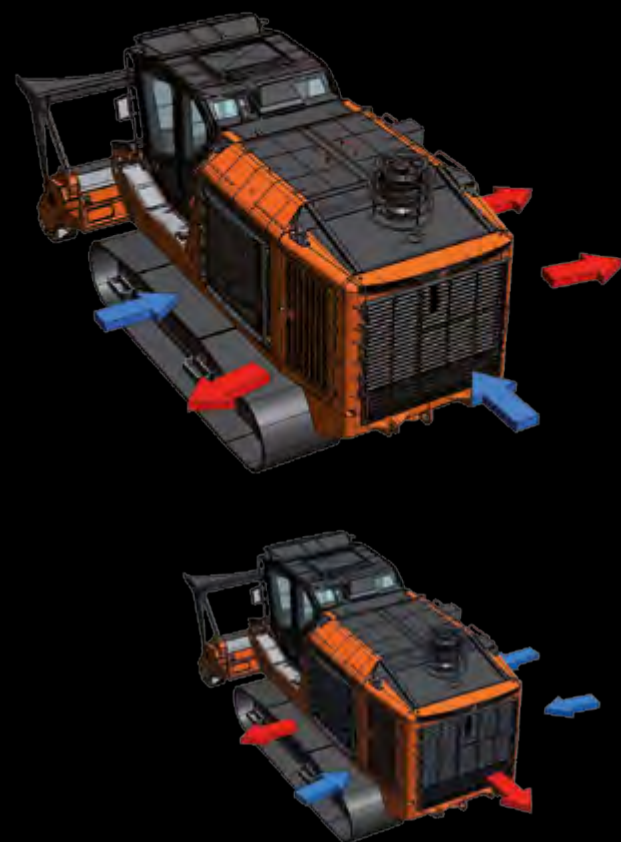
As an option, both the oil cooler and the engine radiator can be equipped with a proportional (so-called variable pitch) and reversible fan. Based on radiator temperatures (coolant, inter-cooler and hydraulic oil) the blades will automatically adjust their position in the most efficient and effective way.

This results in less power absorbed by the fan, lower fuel consumption, and less air and dust flow crossing the engine compartment, helping to keep it cleaner.



Maintenance and serviceability

The efficient and functional design of PT-475 and the arrangement of its components make all parts easily accessible. The tiltable ROPS/FOPS/OPS cab, the big side doors and the swing-out oil cooler and air condenser assure easy cleaning as well as excellent access to daily service points, engine and hydraulic filters.



PrimeTech launches its new flagship model: the PT-475!

A tracked purpose-built carrier for superior performance, productivity and serviceability.



Engine

A CAT C13 Acert, 12.5 L (763 in³) turbocharged and aftercooled engine, with 6 in-line cylinders and 475 HP, that is very fuel efficient and available in the version Tier 3 / Stage IIIA and Tier 4 Final / Stage IV.

Hydraulics and electronics

A powerful Danfoss hydraulic system with 4 pumps and 4 motors for tracks and front attachments, provides the maximum power for any applications. Exclusive to PrimeTech, an electronic flow-sharing system automatically ensures an efficient oil flow to all control valve circuits.

The display in the cabin shows pressures, temperatures, attachment and travel speeds and allows the operator to set travel and front attachment parameters as well as fan drive cleaning cycles.



Front attachments

The front attachments, made by FAE, provide high quality operation and reliability defining also the versatility of the unit. PT-475 can indeed be equipped with a variety of front attachments such as forestry mulchers, soil stabilizers/subsoilers and rock crushers. Changing the attachment and thus adapting the carrier for different applications is easy and can be done quickly. With a relative small investment you can use the machine on different job sites because PT-475 is not limited to one application.

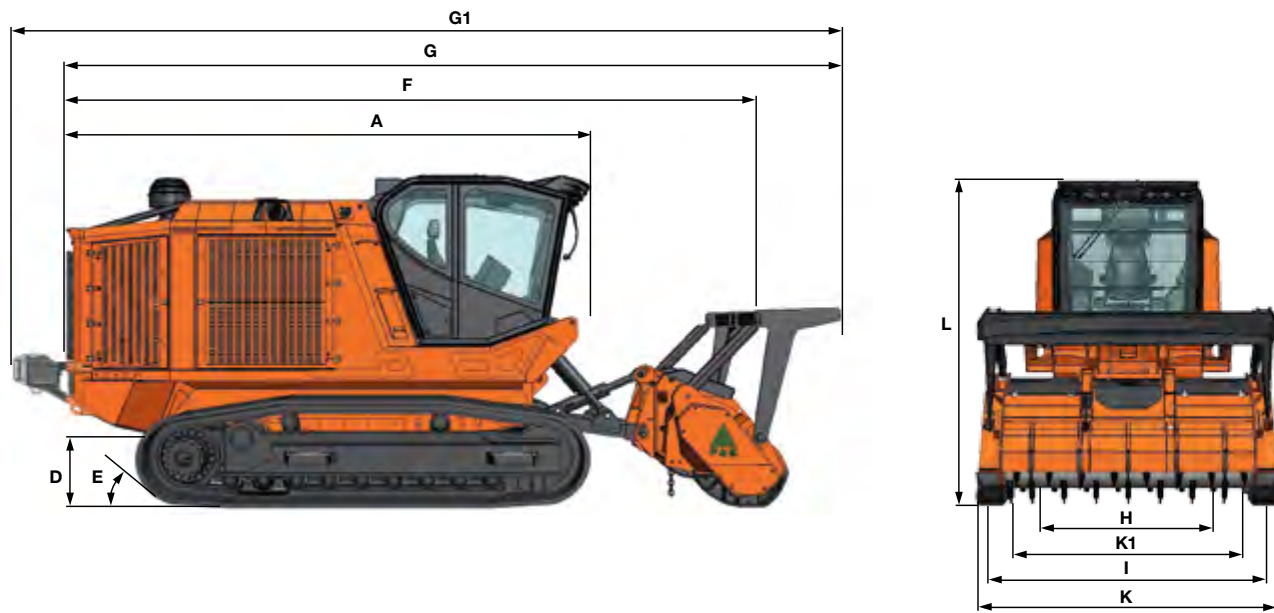


FAE Group S.p.A. - PrimeTech Division
Via G. Marconi, 20 // 38011 Sarnonico (TN) // Italy // Tel. +39 0463 840 080 // Fax +39 0463 840 099

PrimeTech Shredding Equipment Ltd. - Branch Office
PO Box 4265, 110 Saskatchewan Ave - Spruce Grove, AB, T7X 3B4 // Canada // Tel. 780-948-8882 // Fax 780-948-8886
www.prime-tech.com // info@prime-tech.com



a brand of FAE Group



> DIMENSIONS

A Overall length without mulcher	231 in	5860 mm
D Ground clearance	24 in	600 mm
E Hitch angle	38°	
F Overall length with mulcher on ground	279 in	7090 mm
G Transport length with mulcher on ground	297 in	7550 mm
G1 Transport length with mulcher on ground and winch	323 in	8200 mm
L1 Cab height	130 in	3300 mm

VERSION	STD	LGP
Track width	24 in 600 mm	36 in 900 mm
H Track gauge	77 in 1950 mm	77 in 1950 mm
I Overall track width	100 in 2550 mm	112 in 2850 mm
FAE ATTACHMENT	300/U-225	300/U-250
K Overall width	108 in 2734 mm	117 in 2974 mm
K1 Working width	91 in 2304 mm	100 in 2544 mm

> MAIN KEYS

• Max forward speed	4 mph	6.5 km/h
• Max reverse speed	4 mph	6.5 km/h
• Drawbar pull	81600 lbf	36300 daN
• Gradeability	100%	
• Tracks control	Danfoss Electronic Joystick	
• Service hydraulic circuit control	Danfoss Electronic Joystick	

• Parking brake	Automatic	
VERSION	STD	LGP
• Track width	24 in 600 mm	36 in 900 mm
• Operating weight	50265 lbs 22800 kg	52690 lbs 23900 kg
• Ground pressure	7.0 psi 0,51 kg/cm ²	4.9 psi 0,36 kg/cm ²

> DIESEL ENGINE

• Model	CAT C13 Acert	
• Gross power	475 HP (354 KW)	@ 2100 rpm
• Max power	475 HP (354 KW)	@ 1800 rpm
• Displacement	763 in ³	12,5 l

• N° of cylinders	6	
• Torque max	1544 lbf-ft	2094 Nm @1400 rpm
• Fuel rate from	15 gal/h	58 l/h
• Emission	Tier 4 Final / Stage IV - Tier 3 / Stage IIIA	

> HYDROSTATIC TRACKS TRANSMISSION

• Pumps (2)	Danfoss	100 cc
• Motors (2)	Danfoss	160 cc
• Max pressure	6000 psi	420 bar
• Oil flow (2)	118 gal/min	446 l/min
• Hydraulic emergency stop		

> HYDROSTATIC MULCHER TRANSMISSION

• Pumps (2)	Danfoss	130 cc
• Motors (2)	Danfoss	160 cc
• Work pressure	5440 psi	375 bar
• Oil flow	153 gal/min	580 l/min

> REFILLING

• Hydraulic oil tank	127 gal	480 l
• Fuel tank	209 gal	790 l

> UNDERCARRIAGE AND TRACKS

• Undercarriage	D5HD - oscillating	
• Track shoes single grouser type:	24 in	600 mm
• Track shoes double grouser type:	36 in	900 mm

> 300/U

MODEL	300/U-225		300/U-250	
• Rotor diameter	24 in	600 mm	24 in	600 mm
• Overall width	108 in	2734 mm	117 in	2974 mm
• Working width	91 in	2304 mm	100 in	2544 mm
• Weight	8160 lbs	3700 kg	8600 lbs	3900 kg
• Max. working depth	4 in	100 mm	4 in	100 mm
• Grinding diameter (max)	16 in	400 mm	16 in	400 mm
• Quantity of cutting teeth tungsten carbide type "B/3"	80 + 2		92 + 2	
• Quantity of cutting teeth tungsten carbide type "C/3"	50 + 2		56 + 2	
• Rotor rpm	1550 - 1700		1550 - 1700	
• Hydraulic motor type	Danfoss	160 cc	Danfoss	160 cc

> 500/U

MODEL	500/U-225		500/U-250	
• Rotor diameter	28 in	700 mm	28 in	700 mm
• Overall width	110 in	2805 mm	120 in	3045 mm
• Working width	91 in	2320 mm	100 in	2560 mm
• Weight	8820 lbs	4000 kg	9260 lbs	4200 kg
• Max. working depth	6 in	150 mm	6 in	150 mm
• Grinding diameter (max)	20 in	500 mm	20 in	500 mm
• Quantity of cutting teeth tungsten carbide type "A/3"	88 + 2		96 + 2	
• Quantity of cutting teeth tungsten carbide type "C/3"	54 + 2		60 + 2	
• Rotor rpm	1250 - 1500		1250 - 1500	
• Hydraulic motor type	Bosch Rexroth	200 cc	Bosch Rexroth	200 cc

> SFH/PM

MODEL	SFH/PM-225		SFH/PM-250	
• Rotor diameter	36 in	900 mm	36 in	900 mm
• Overall width	107 in	2710 mm	116 in	2950 mm
• Working width	91 in	2320 mm	101 in	2560 mm
• Weight	13228 lbs	6000 kg	14000 lbs	6350 kg
• Max. working depth	16 in	400 mm	16 in	400 mm
• Max. grinding diameter (rocks)	14 in	350 mm	14 in	350 mm
• Max. grinding diameter (trees)	18 in	450 mm	18 in	450 mm
• Quantity of cutting teeth tungsten carbide type "G/3"	62		68	
• Quantity of side protection tools type «STC/3/FP»	4		4	
• Quantity of side protection tools type «STC/FP»	4		4	
• Rotor rpm	400 - 450		400 - 450	
• Hydraulic motor type	Danfoss	250 cc	Danfoss	250 cc